

OFFICE SPACE FOR LEASE IN OLD TOWN SCOTTSDALE



FOR MORE INFORMATION CONTACT:

KELLY O'DEA

480.294.6005

kodea@levrose.com

4414 N. Civic Center Plaza, Suite 100

Scottsdale, AZ 85251

T: 480.294.0600 | www.levrose.com



LEVROSE
COMMERCIAL REAL ESTATE

7411 E. 6TH AVENUE | SCOTTSDALE, AZ 85251

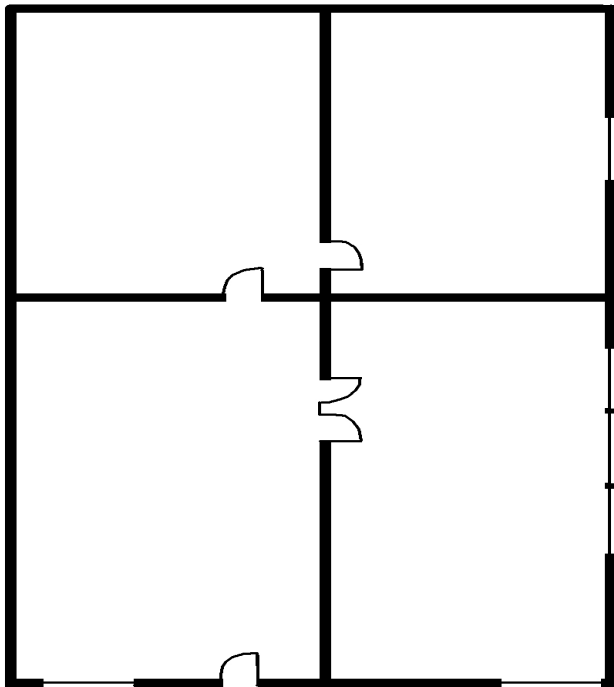
HIGHLIGHTS

- Pull-up parking with covered available
- Two-story building
- Walking distance to many local restaurants, shopping, hotels & banks
- Small office, perfect for a new small business
- Great location in Old Town
- Owner Agent

7411 E. 6TH AVENUE

AVAILABLE	SIZE	LEASE RATE
Suite 106	±700 SF	\$16.95/SF Modified Gross

SUITE 106



FOR MORE INFORMATION CONTACT:

KELLY O'DEA
480.294.6005
kodea@levrose.com

This information has been secured from sources believed to be reliable, but no representations or warranties are made, expressed or implied, as to the accuracy of the information. References to square footage are approximate. Buyer and tenant must verify the information and bears all risk for any inaccuracies. All quoted prices are subject to change without notice.

LEVROSE
COMMERCIAL REAL ESTATE

4414 N. Civic Center Plaza, Suite 100
Scottsdale, AZ 85251
T: 480.294.0600 | www.levrose.com

