

FOR LEASE

# Tasman Station



1255 REAMWOOD AVENUE, SUNNYVALE, CA



## 1255 Reamwood

- ±4,600 Square Feet
- 60% Office
- 30% Drop Ceiling, Tile
- 10% Warehouse
- 100% HVAC
- 400 Amps
- Sprinklered
- **\$1.55 NNN**

## Highlights

- Tenant Improvement Dollars Available
- Flexible Floor Plan
- Easy Access to Several Sit Down and Fast Food Restaurants
- Located Directly in Front of the Light Rail Tasman Station, Express and Local Bus Stop
- Minutes from Lawrence Expressway and Highway 101



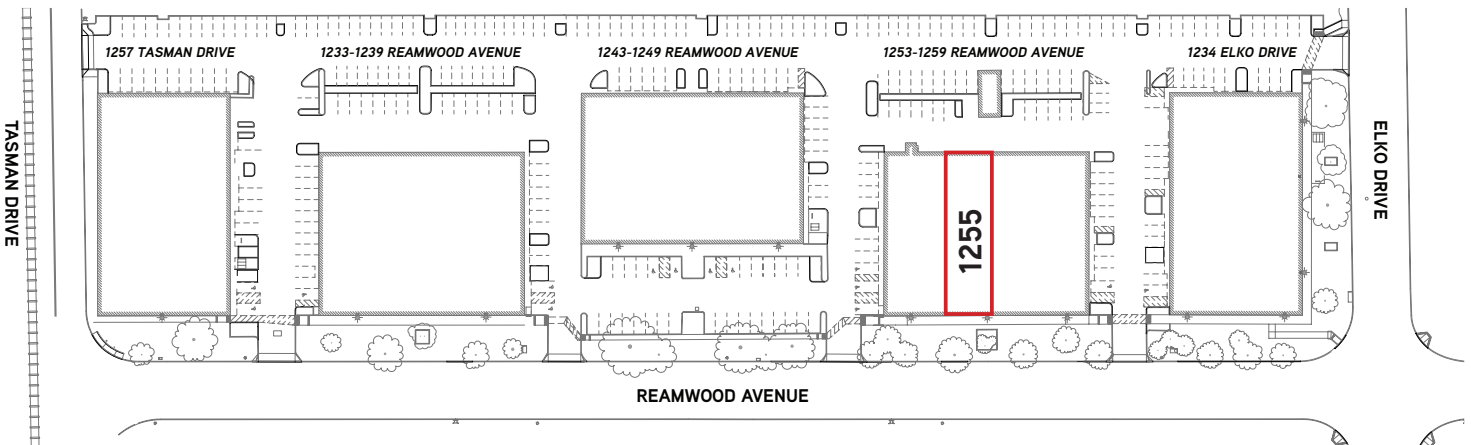
STEVE ZAMUDIO, CCIM  
+1 408 282 3824  
steve.zamudio@colliers.com  
CA License No. 00905956

MICHAEL JOHNSON, SIOR  
±1 408 282 3852  
m.johnson@colliers.com  
CA License No. 00884723

COLLIERS INTERNATIONAL  
Silicon Valley  
450 West Santa Clara Street  
San Jose, CA 95113  
www.colliers.com

# Tasman Station

Building 4 - 1255 Reamwood Avenue, Sunnyvale



Drawings not exact/not to scale. The information furnished has been obtained from sources we deem reliable and is submitted subject to errors, omissions and changes. Although Colliers International has no reason to doubt its accuracy, we do not guarantee it. All information should be verified by the recipient prior to lease, purchase, exchange, or execution of legal documents. © 2014 Colliers International

