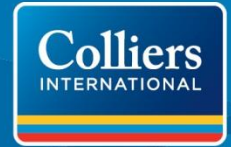
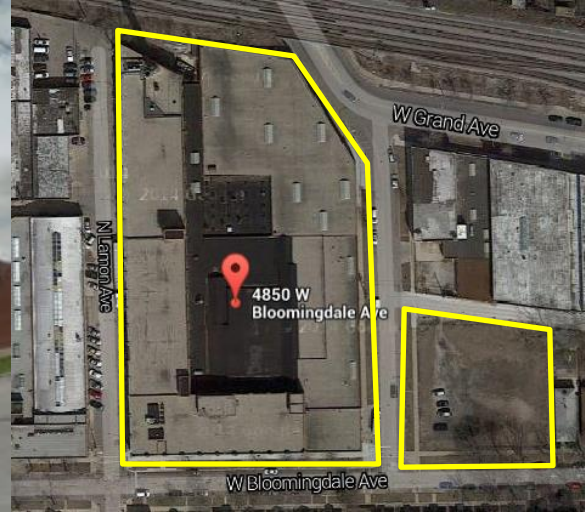


FOR SALE/LEASE > 160,000 SQUARE FEET ON 3.28 ACRES

4850 W. Bloomingdale Ave.



CHICAGO, IL



About This Property

- > Available: 160,000 SF | 117,500 1st Fl | 42,500 2nd Fl
- > Building Size: 160,000 SF
- > Land Site: 3.28 acres
- > Existing Office: ±2,000 SF
- > Ceiling Height: 10' - 18' clear
- > Loading: 4 interior docks with levelators
- > Power: 3,600 amps/240 volt/3-phase/3-wire
- > Zoning: M1-2
- > Year Built: 1972
- > Sale Price: Subject to Offer
- > Lease Rate: Subject to Offer
- > Real Estate Taxes: \$85,252.91 (2013 payable 2014)
- > Ward | Alderman: 37 | Alderman Emma Mitts
- > Comments: Two - 2,000 lb. capacity elevators
Public transportation within 1 block
Close proximity to I-290 via Cicero Ave.

Contact Us

STEVEN A. KOHN, SIOR
Senior Vice President
847 698 8224
Steven.Kohn@colliers.com

No warranty or representation is made to the accuracy of the foregoing information.
Terms of sale or lease and availability are subject to change or withdrawal without notice.

COLLIERS INTERNATIONAL
6250 N. River Road, Suite 11-100
Rosemont, IL 60018
www.colliers.com

4850 W. Bloomingdale | Chicago, IL

160,000 Square Feet

Available:	160,000 SF 117,500 SF 1 st Floor 42,500 SF 2 nd Floor 23,500 SF - Parking
Building Size:	160,000 SF
Existing Office:	±2,000 SF
Land Size:	3.28 acres
Ceiling Height:	10' – 18' clear
Loading:	4 interior docks with levelators
Power:	3,600 amps 240 volt 3-phase 3 wire
Zoning:	M1-2 (restricted manufacturing)
Year Built:	1972
Sale Price:	Subject to Offer
Lease Rate:	Subject to Offer
Real Estate Taxes:	\$85,252.91 (2013 payable 2014)
Ward Alderman:	37 Alderman Emma Mitts
Comments:	<ul style="list-style-type: none">Two – 2,000 lb. capacity elevatorsPublic transportation within 1 blockLarge land site suitable for redevelopment to many uses

For more information,
please contact:

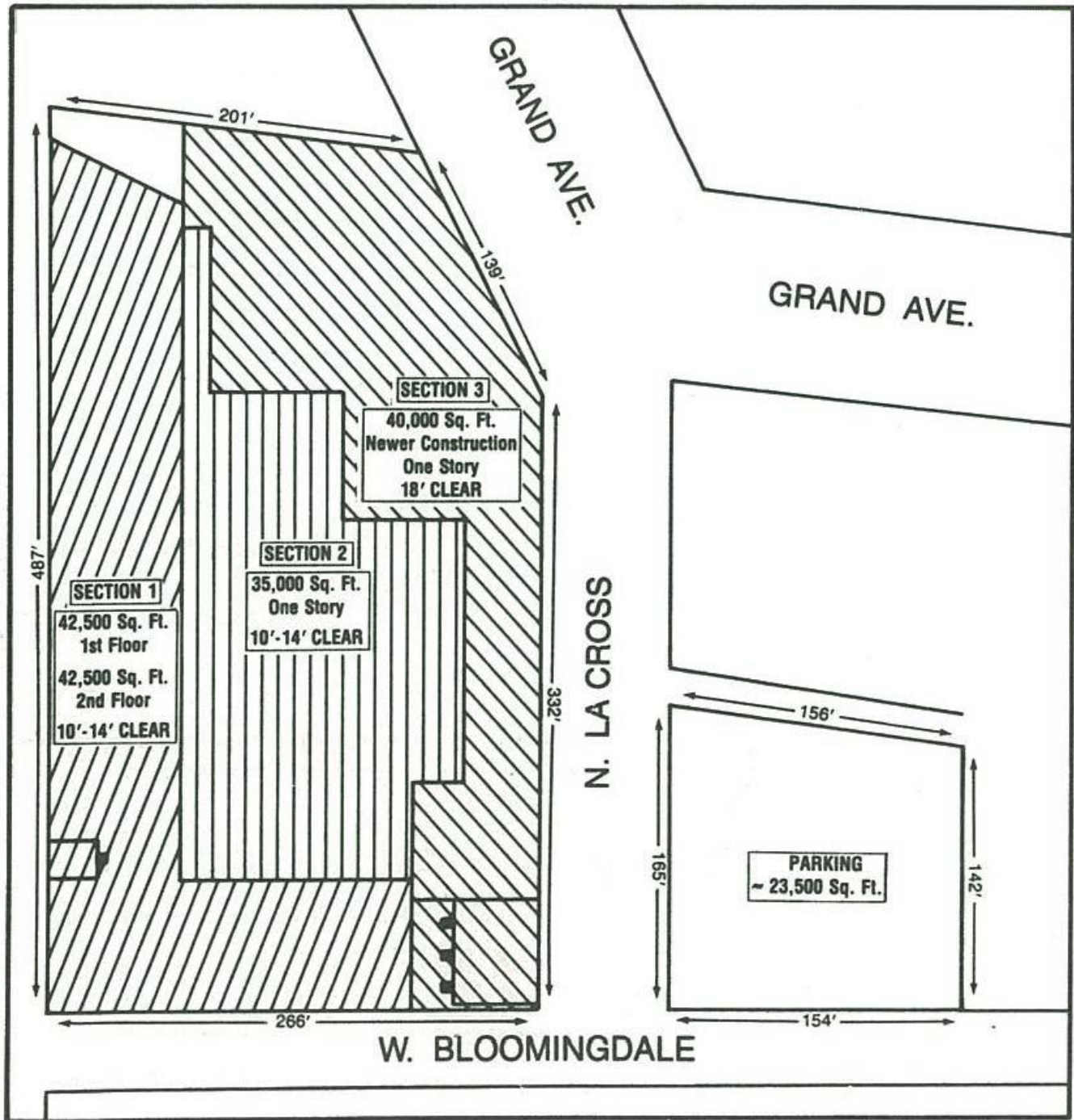
STEVEN A. KOHN, SIOR
Senior Vice President
847 698 8224
Steven.Kohn@colliers.com

COLLIERS INTERNATIONAL
6250 N. River Road
Suite 11-100
Rosemont, IL 60018

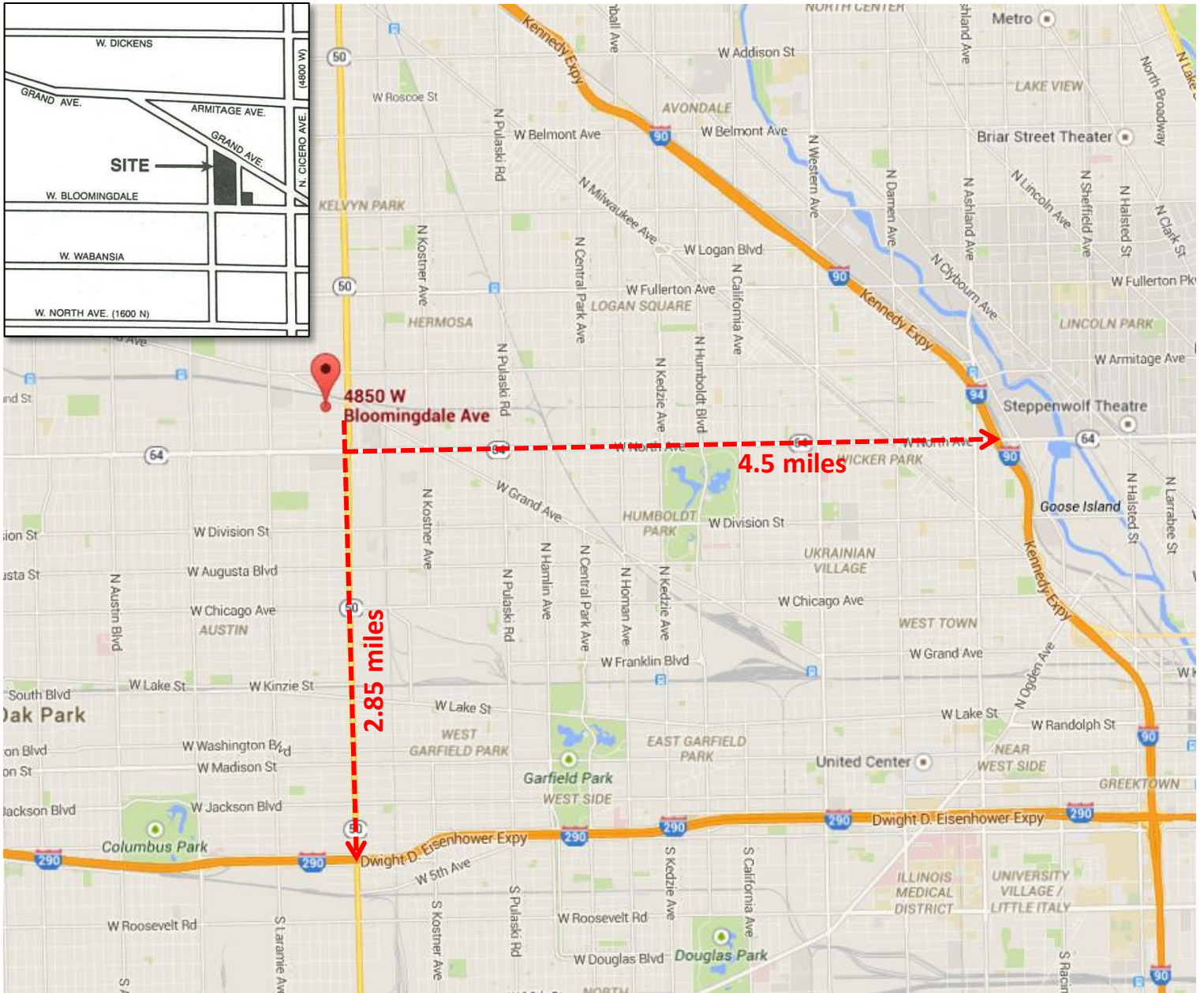
No warranty or representation is made to
the accuracy of the foregoing information.



4850 W. Bloomingdale > Site Plan



4850 W. Bloomingdale > Location Map



STEVEN A. KOHN, SIOR
Senior Vice President
847 698 8224
Steven.Kohn@colliers.com

