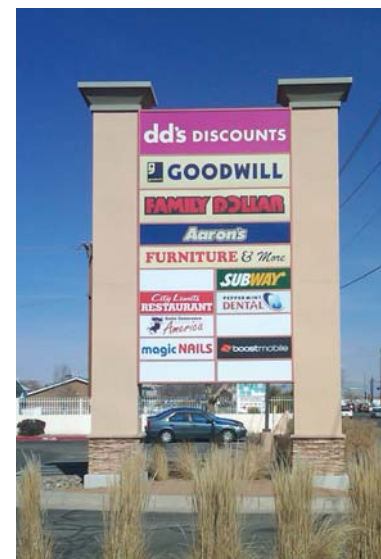


FOR
LEASE

RIO BRAVO SQUARE

RETAIL SPACE AVAILABLE NEAR SUCCESSFUL NATIONAL CHAINS

NWC COORS BLVD & RIO BRAVO BLVD :: ALBUQUERQUE, NM 87121



AVAILABLE

:: IN-LINE SHOP SPACE:

B3 - 1,046± SF

F1 - 2,427± SF


G2 - 825± SF

:: SHOP SPACE ADJACENT TO JR. ANCHOR:

A1 - A3 - up to 7,936± SF

FEATURES

- :: Located in the most underserved trade area in Albuquerque.
- :: 10.61 square feet of retail space per person in the Southwest Trade Area compared to 38.87 square feet of retail space per person in Albuquerque.

- ::  Join high performing national retailer dd's Discounts.

dd's
DISCOUNTSFOR MORE
INFORMATION
PLEASE
CONTACT

Jim Dountas

Senior Associate

505.837.4955

jim.dountas@cbre.com

FOR
LEASE

RIO BRAVO SQUARE

RETAIL SPACE AVAILABLE NEAR SUCCESSFUL NATIONAL CHAINS

NWC COORS BLVD & RIO BRAVO BLVD :: ALBUQUERQUE, NM 87121



FOR
LEASE

RIO BRAVO SQUARE

RETAIL SPACE AVAILABLE NEAR SUCCESSFUL NATIONAL CHAINS

NWC COORS BLVD & RIO BRAVO BLVD :: ALBUQUERQUE, NM 87121

SITE PLAN



DEMOGRAPHICS

2014 ESTIMATED DEMOGRAPHICS

| | 1 mile | 3 miles | 5 miles |
|--------------------------|----------|----------|----------|
| POPULATION: | 6,400 | 78,250 | 144,726 |
| MEDIAN HH INCOME: | \$33,694 | \$41,205 | \$38,550 |

Population Median HH Income

| | | |
|---|---------|----------|
| POLYGON TRADE AREA | 110,123 | \$40,549 |
| East boundary: I-25 North boundary: Bridge/Sage West boundary: Paseo del Volcan South boundary: I-25/Isleta | | |

2013 TRAFFIC COUNTS

| | |
|-----------------------|--------|
| COORS BLVD | 16,200 |
| RIO BRAVO BLVD | 18,600 |

FOR MORE
INFORMATION
PLEASE
CONTACT

Jim Dountas
Senior Associate
505.837.4955
jim.dountas@cbre.com