

FOR LEASE | OFFICE SPACE

# Pointe South Mountain Corporate Center

8222 S 48TH STREET | PHOENIX, ARIZONA



28,000 SF of  
Contiguous Space  
Available at \$15.00/SF



## Building Features

- ±109,310 SF – 2 story office building
- Spaces available from 1,511 SF up to 28,000 SF of contiguous space
- 6/1,000 SF parking ratio
- Managed by Arden Realty
- Handicap accessible elevators
- Building and suite signage available
- Covered reserved parking available
- Panoramic views of Phantom Golf Course and South Mtn. Park Preserve
- Custom space planning and tenant improvements available
- Generous tenant improvement allowance available



**ARDEN** realty, inc.  
a GE Capital Real Estate company

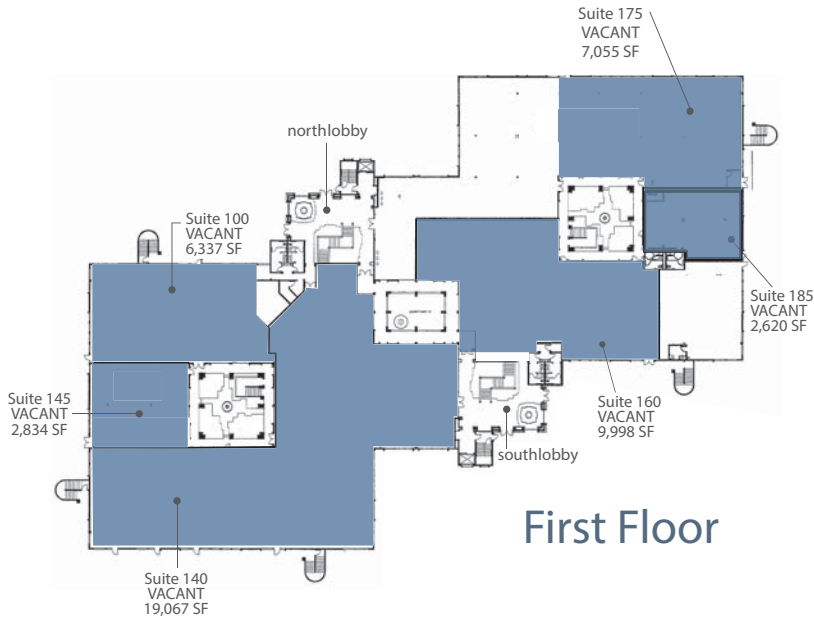
CHARLES MISCIO  
602 222 5192  
PHOENIX, AZ  
charles.miscio@colliers.com

DANNY PLAPP  
602 222 5071  
PHOENIX, AZ  
danny.plapp@colliers.com

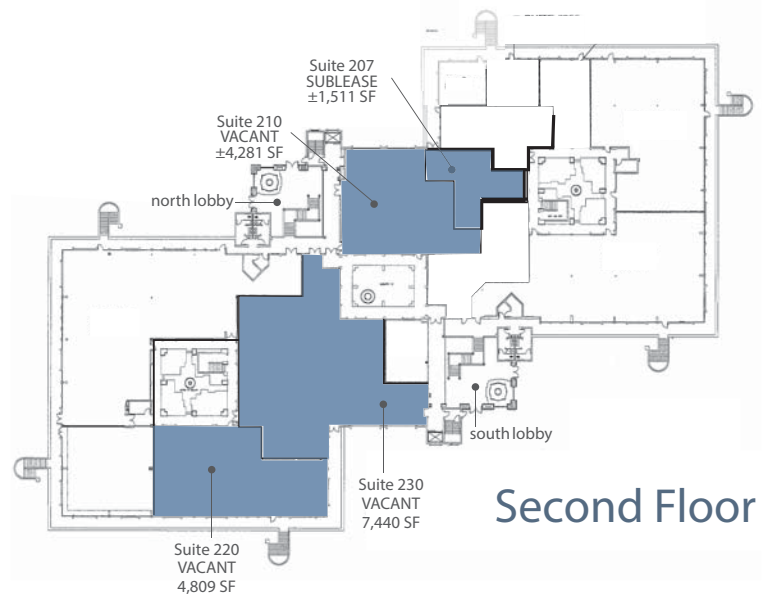
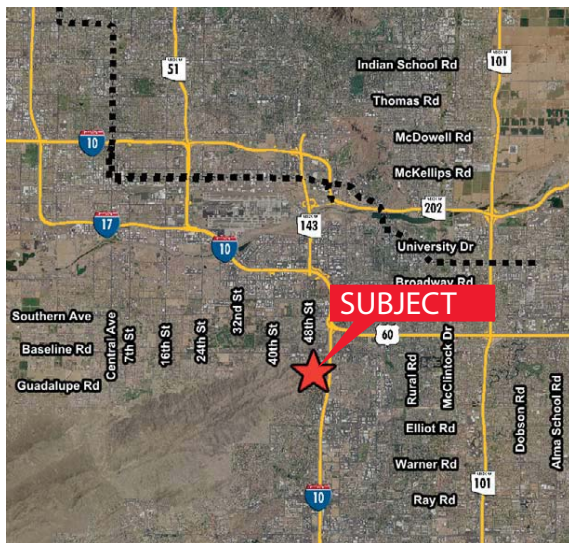
COLLIERS INTERNATIONAL  
2390 E. Camelback Rd, Suite 100  
Phoenix, AZ 85016  
www.colliers.com/greaterphoenix

# Pointe South Mountain Corporate Center

8222 S 48TH STREET | PHOENIX, ARIZONA



- Adjacent to Arizona Grand Resort – Hotel, Day Spa, Fitness, Water Park, Dining and Golf Course
- 2 minutes from Sky Harbor Airport, Arizona Mills Mall, ASU, and directly off I-10 freeway / Baseline Road



CHARLES MISCIO  
602 222 5192  
PHOENIX, AZ  
charles.miscio@colliers.com

DANNY PLAPP  
602 222 5071  
PHOENIX, AZ  
danny.plapp@colliers.com



**ARDEN** realty, inc  
a GE Capital Real Estate company

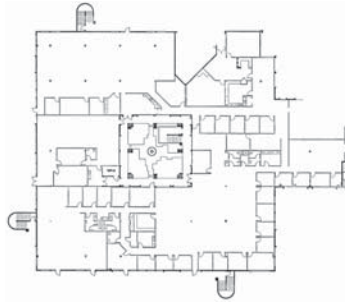
This document/email has been prepared by Colliers International for advertising and general information only. Colliers International makes no guarantees, representations or warranties of any kind, expressed or implied, regarding the information including, but not limited to, warranties of content, accuracy and reliability. Any interested party should undertake their own inquiries as to the accuracy of the information. Colliers International excludes unequivocally all inferred or implied terms, conditions and warranties arising out of this document and excludes all liability for loss and damages arising there from. This publication is the copyrighted property of Colliers International and/or its licensor(s). © 2013. All rights reserved.

COLLIERS INTERNATIONAL  
2390 E. Camelback Rd, Suite 100  
Phoenix, AZ 85016  
www.colliers.com/greaterphoenix

FOR LEASE | OFFICE SPACE

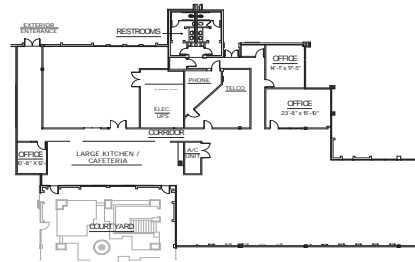
# Pointe South Mountain Corporate Center

8222 S 48TH STREET | PHOENIX, ARIZONA

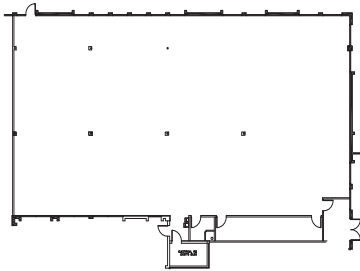


Suites 100, 140 & 145\*

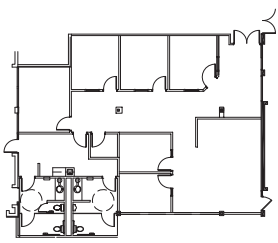
\* 28,238 SF contiguous



Suite 160- 9,998 SF

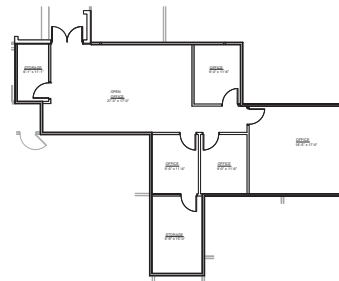


Suite 175 - 7,055 SF\*

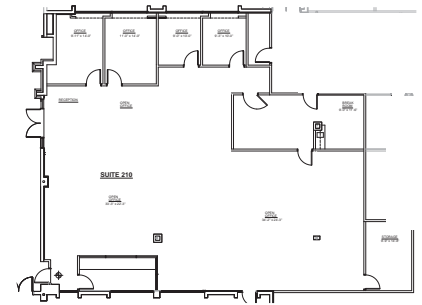


Suite 185 - 2,620 SF\*

Suites 175 & 185\* - 9,675 SF contiguous

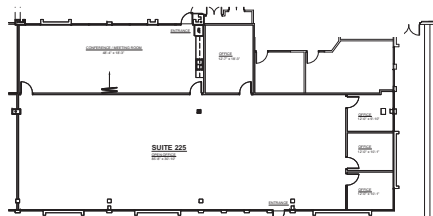


Suite 207 - 1,511 SF\*



Suite 210 - 4,281 SF\*

Suites 207 & 210\* - 5,792 SF contiguous



Suite 220 - 4,809 SF\*



Suite 230 - 7,440 SF\*

Suites 220 & 230\* - 12,249 SF contiguous

CHARLES MISCIO  
602 222 5192  
PHOENIX, AZ  
charles.miscio@colliers.com

DANNY PLAPP  
602 222 5071  
PHOENIX, AZ  
danny.plapp@colliers.com



**ARDEN** realty, inc.  
a GE Capital Real Estate company

This document/email has been prepared by Colliers International for advertising and general information only. Colliers International makes no guarantees, representations or warranties of any kind, expressed or implied, regarding the information including, but not limited to, warranties of content, accuracy and reliability. Any interested party should undertake their own inquiries as to the accuracy of the information. Colliers International excludes unequivocally all inferred or implied terms, conditions and warranties arising out of this document and excludes all liability for loss and damages arising therefrom. This publication is the copyrighted property of Colliers International and /or its licensor(s). © 2013. All rights reserved.

COLLIERS INTERNATIONAL  
2390 E. Camelback Rd, Suite 100  
Phoenix, AZ 85016  
www.colliers.com/greaterphoenix

# Pointe South Mountain Corporate Center

8222 S 48TH STREET | PHOENIX, ARIZONA



CHARLES MISICIO  
602 222 5192  
PHOENIX, AZ  
charles.miscio@colliers.com

DANNY PLAPP  
602 222 5071  
PHOENIX, AZ  
danny.plapp@colliers.com



**ARDEN** realty, inc  
a GE Capital Real Estate company

This document/email has been prepared by Colliers International for advertising and general information only. Colliers International makes no guarantees, representations or warranties of any kind, expressed or implied, regarding the information including, but not limited to, warranties of content, accuracy and reliability. Any interested party should undertake their own inquiries as to the accuracy of the information. Colliers International excludes unequivocally all inferred or implied terms, conditions and warranties arising out of this document and excludes all liability for loss and damages arising therefrom. This publication is the copyrighted property of Colliers International and /or its licensor(s). © 2013. All rights reserved.

COLLIERS INTERNATIONAL  
2390 E. Camelback Rd, Suite 100  
Phoenix, AZ 85016  
www.colliers.com/greaterphoenix