

1820 Brummel | Elk Grove Village

22,500 Square Feet Regent O'Hare Industrial Center

Available:	22,500 SF
Total Building Size:	60,118 SF
Existing Office:	1,193 SF
Ceiling Height:	20' 6"
Loading:	2 Interior Docks
Power:	600 amps/480 volts
Car Parking:	78 cars
Real Estate Taxes:	\$1.89/SF
CAM:	\$0.76/SF
Lease Rate:	\$5.25/SF Net
Year Built:	1978
Comments:	<ul style="list-style-type: none">■ Excellent Elk Grove Village location■ Close proximity to O'Hare and major highways■ Immediate access to Busse Road/Route 83

For more information,
please contact:

MATTHEW J. STAUBER,
SIOR
Principal
847 698 8236
matthew.stauber@colliers.com

THOMAS C. RODENO
Senior Vice President
847 698 8231
tom.rodeno@colliers.com

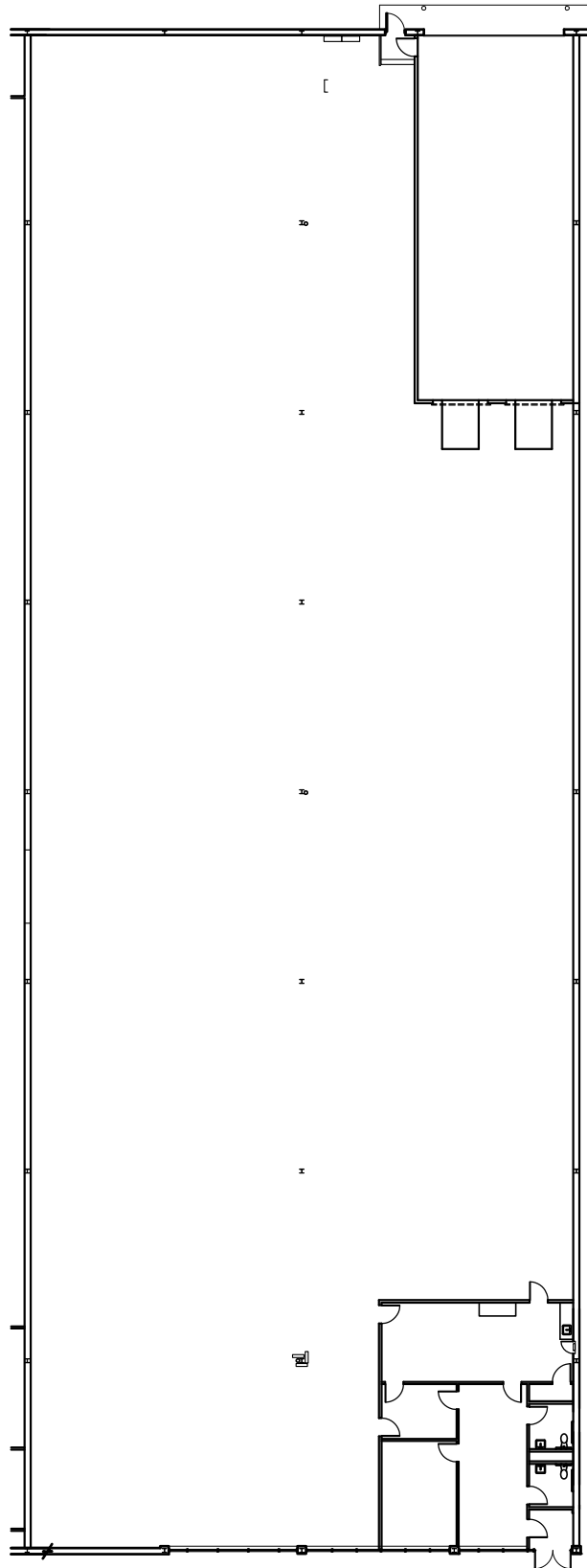
PATRICK TURNER
Associate
847 698 8277
patrick.turner@colliers.com

JASON M. SIMON
Senior Associate
847 698 8531
jason.simon@colliers.com

COLLIERS INTERNATIONAL
6250 N. River Road
Suite 11-100
Rosemont, IL 60018

No warranty or representation is made to the
accuracy of the foregoing information.





Floor Plan

Not To Scale

North



This drawing indicates the general scope of the building in terms of its layout. Contractors shall field verify any critical dimensions prior to construction. This drawing has been prepared by Gensburg, Ltd. Architecture/Design, 105 Revere Dr. Suite G, Northbrook, Illinois 60062 Phone: (847) 715-9591.

**1820 Brummel Dr.
Regent Industrial Center
Elk Grove Village, Illinois**

Draper And Kramer
INCORPORATED

921 Busse Road
Elk Grove Village, IL 60007
Fax: (847) 640-7218
Phone: (847) 640-0640