

PORTOFINO PLAZA

2525 W. HORIZON RIDGE PKWY
HENDERSON, NV 89052



COMMERCE
REAL ESTATE SOLUTIONS • COMRE.COM
INDEPENDENTLY OWNED AND OPERATED

SECOND FLOOR OFFICE SPACE

±1,422 RSF TO ±10,101 RSF AVAILABLE

FOR LEASE



PROPERTY FEATURES

PORTOFINO PLAZA IS LOCATED AT 2525 W. HORIZON RIDGE PARKWAY AND IS A 31,220 SF TWO STORY MIXED USE BUILDING HAVING RETAIL ON THE FIRST FLOOR AND OFFICE ON THE SECOND. THE PROJECT IS STRATEGICALLY LOCATED AT THE SWC OF HORIZON RIDGE PARKWAY & CARNEGIE. THE PROJECT HAS 10,101 RSF OF AVAILABLE OFFICE SPACE ON THE SECOND FLOOR. ALL THE SUITES HAVE BEEN BUILT OUT AND ARE MOVE IN READY WITH ALL NEW FINISHES. EACH SUITE IS CURRENTLY A WIDE OPEN OFFICE SPACE PLAN. THE BUILDING HAS UNIQUE AND UPSCALE ARCHITECTURE AND CONSTRUCTION, WITH AMPLE PARKING; THE TENANTS HAVE ACCESS TO PARKING UNDERNEATH THE BUILDING. TENANTS HAVE EASY ACCESS TO RESTAURANTS AND OTHER AMENITIES ON THE LOWER LEVEL AND IN THE IMMEDIATE AREA.

- High End Architecture
- Suites Ranging from ±1,422 RSF to ±10,101 RSF
- We Could Offer The Entire Second Floor To One Large User
- All Suites are Move In Ready
- High Income Area
- Onsite Amenities
- Underground Tenant Parking with Elevator to the Lobby

For more information, please contact:

BOB HAWKINS
702.688.6959
bhawkins@comre.com

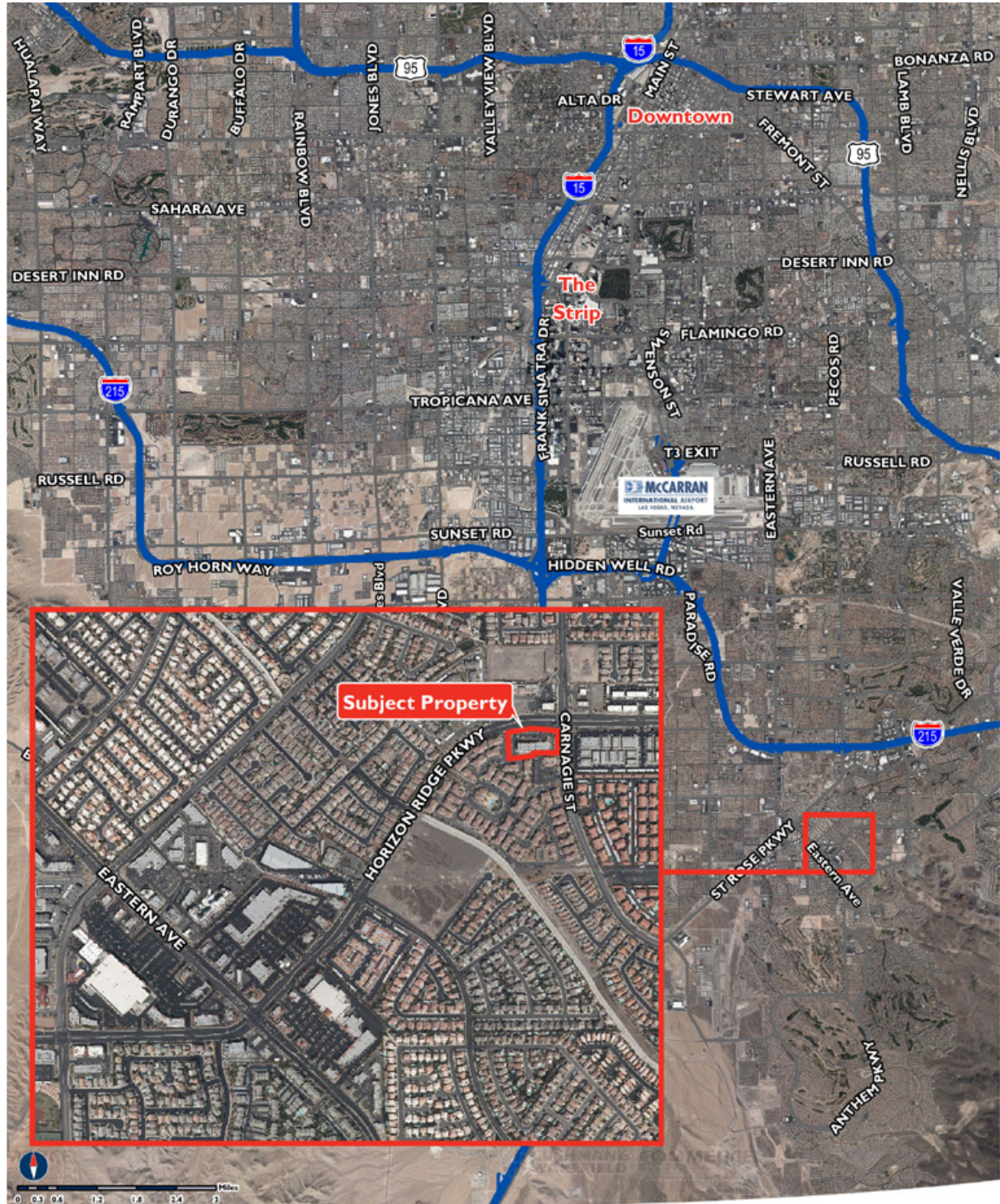
CUSHMAN & WAKEFIELD | COMMERCE
3773 Howard Hughes Parkway, Suite 100 S
Las Vegas, Nevada 89169
(702) 796 7900
www.comre.com

©2015, Commerce Real Estate Solutions. Disclaimer: The above information is given with the obligation that all negotiations relating to the purchase, renting, or leasing of the property described above shall be conducted through Commerce Real Estate Solutions. No warranty or representation, express or implied, is made as to the accuracy of the information contained herein, and same is submitted subject to errors, omissions, change of price, rental or other encumbrances, withdrawal without notice, and to any special listing conditions imposed by the seller. Prospective buyers should conduct their own due diligence. Some aerial photography by DigitalGlobe or Aerials Express.
path: K:\1 - Projects\Las Vegas Office\Bob Hawkins\Flyers\2525 W. horizon Ridge

PORTOFINO PLAZA

2525 W. Horizon Ridge Parkway | Henderson, NV 89052

FOR LEASE



PORTOFINO PLAZA IS STRATEGICALLY LOCATED IN DESIRABLE AREA OF SOUTH GREEN VALLEY WHICH IS IN THE MIDST OF ANTHEM, SEVEN HILLS, MAC DONALD RANCH, THE DISTRICT AND SAINT ROSE HOSPITAL IN A DENSELY POPULATED AREA.

For more information, please contact:

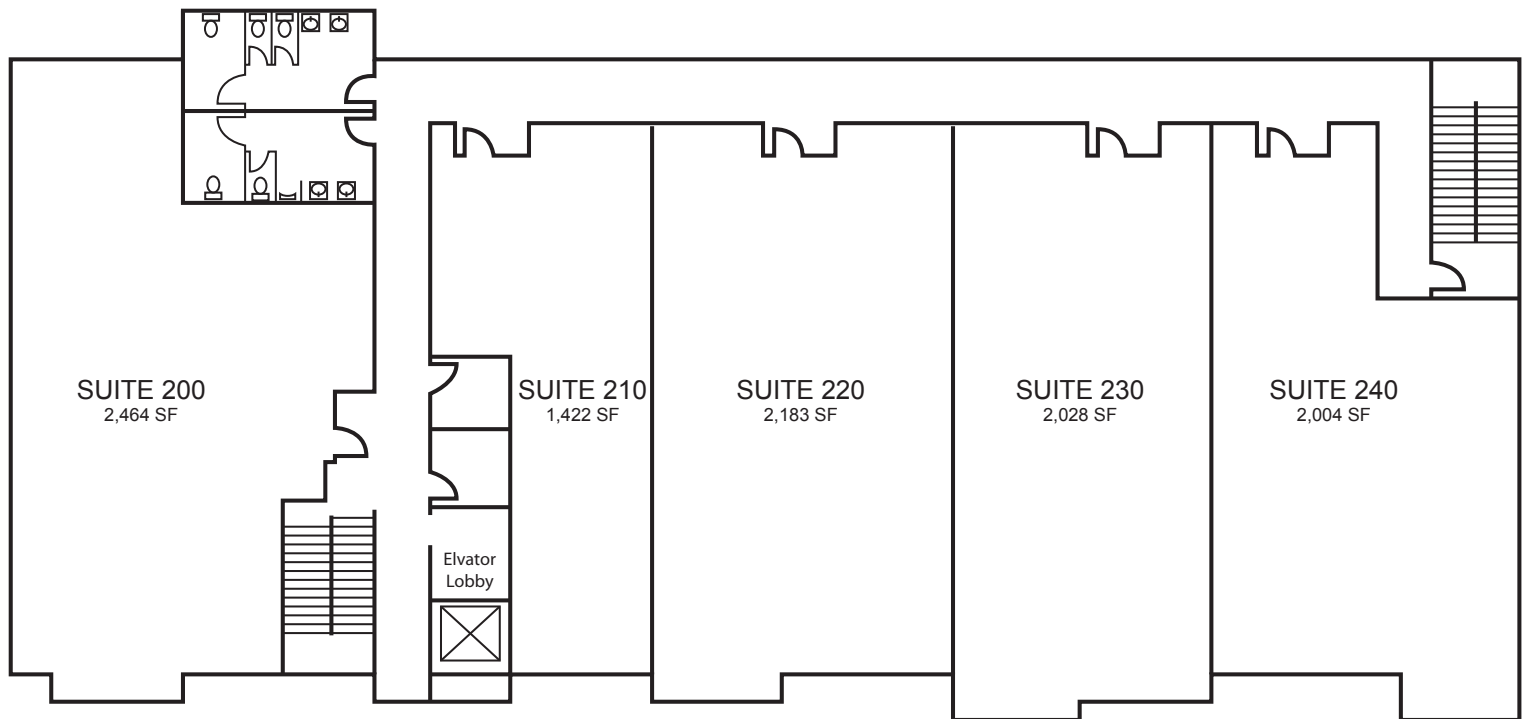
BOB HAWKINS
702.688.6959
bhawkins@comre.com

CUSHMAN & WAKEFIELD | COMMERCE
3773 Howard Hughes Parkway, Suite 100 S
Las Vegas, Nevada 89169
(702) 796 7900
www.comre.com

PORTOFINO PLAZA

2525 W. Horizon Ridge Parkway | Henderson, NV 89052

FOR LEASE



For more information, please contact:

BOB HAWKINS
702.688.6959
bhawkins@comre.com

CUSHMAN & WAKEFIELD | COMMERCE
3773 Howard Hughes Parkway, Suite 100 S
Las Vegas, Nevada 89169
(702) 796 7900
www.comre.com