



# Palm Court Business Center

2929 North 44th Street, Phoenix, Arizona



## FOR LEASE

### Property Highlights:

- Building Size : 56,134 SF
  - Available
    - Suite 110: 1,848 RSF
    - Suite 204: 1,131 RSF
    - Suite 210: 2,129 RSF
    - Suite 220: 1,147 RSF\*
    - Suite 228: 3,850 RSF\*
    - Suite 230: 2,408 RSF\*
    - Suite 310: 667 RSF
    - Suite 340: 1,257 RSF
  - Available : 7,408 RSF Contiguous Space
  - Rental Rate : \$16.00/SF Full Service for the First Year
  - Parking : 3.3:1000
  - Year Built : 1983
  - Load Factor : 12%
- Property Features :
    - Convenient access to Loop 202
    - Numerous restaurants and amenities in close proximity
    - On site fitness facility, racquet ball courts, free weights, etc.
    - Five minutes to downtown Phoenix



\*Contiguous

For more information, please contact:

### Gordon Raguse

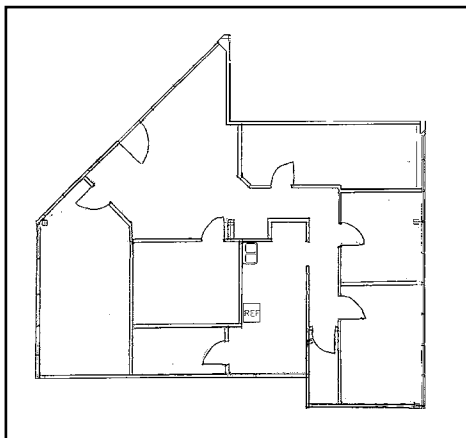
Senior Vice President  
+1 602 224 4452  
Gordon.Raguse@dtz.com

2375 E. Camelback Rd, Suite 300  
Phoenix, Arizona 85016  
ph: +1 602 954 9000  
fx: +1 602 468 8588  
dtz.com

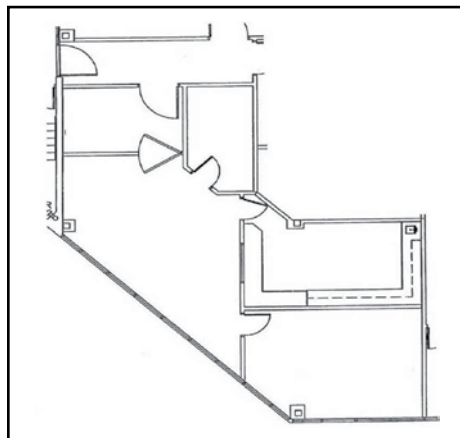


# Palm Court Business Center

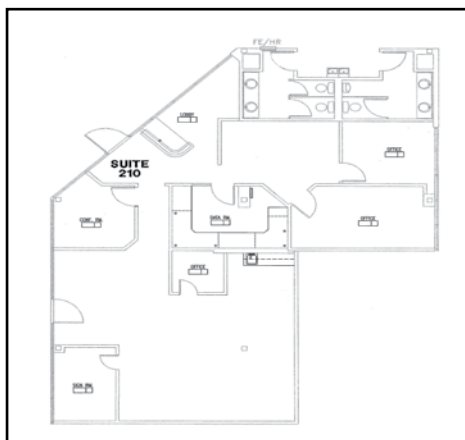
2929 North 44th Street, Phoenix, Arizona



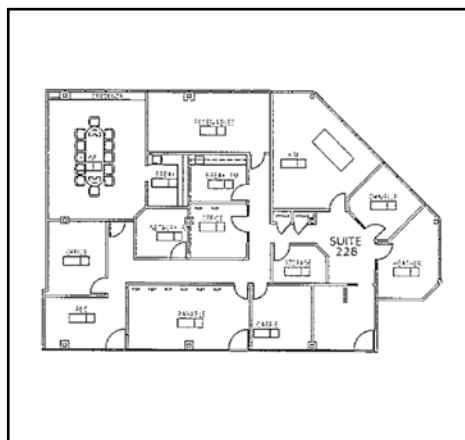
Suite 110 - 1,848 RSF



Suite 204 - 1,131 RSF



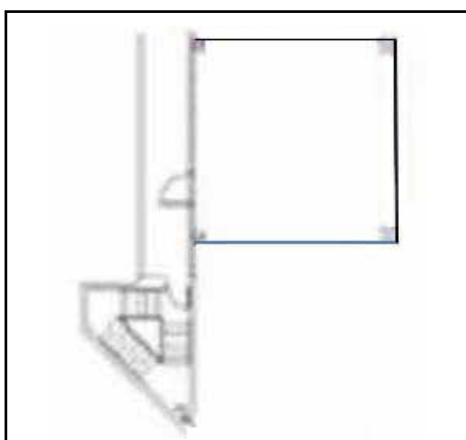
Suite 210 - 2,129 RSF



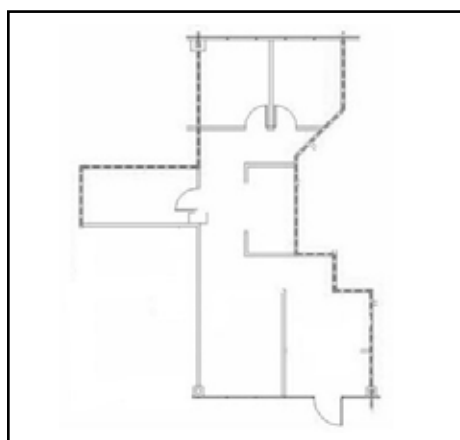
Suite 228 - 3,850 RSF



Suite 230 - 2,408 RSF



Suite 310 - 667 RSF



Suite 340 - 1,257 RSF

For more information, please contact:

**Gordon Raguse**

Senior Vice President

+1 602 224 4452

Gordon.Raguse@dtz.com

2375 E. Camelback Rd, Suite 300

Phoenix, Arizona 85016

ph: +1 602 954 9000

fx: +1 602 468 8588

dtz.com