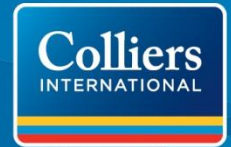


EXCELLENT PROXIMITY TO DOWNTOWN CHICAGO AND ALL MAJOR EXPRESSWAYS



2400 S. Laflin Street

CHICAGO, IL



About This Property

- › Available: 43,000 SF
- › Site Size: 1.98 Acres
- › Existing Office: 3,000 SF
- › Construction: Brick
- › Loading: Three (3) docks
- › Clear Height: 18'
- › Drive-in Doors: Three (3)
- › Heat: To suit
- › Year Built: 1960's
- › Zoning: PMD-11
- › Sale Price: STO
- › Lease Rate at \$4.95 gross "as is"

Contact Us

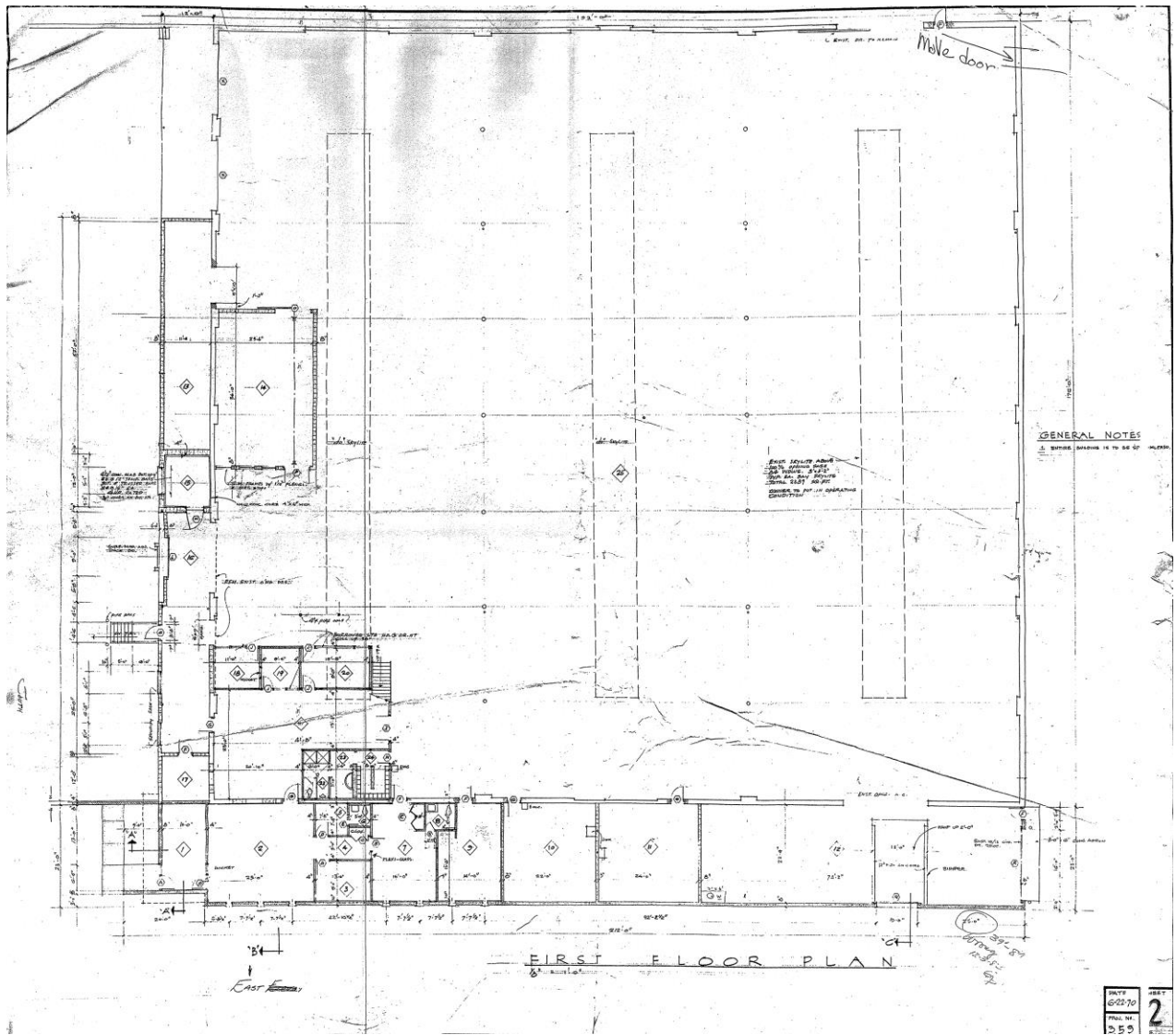
MICHAEL L. SENNER, SIOR
Executive Vice President
847 698 8234
Mike.Senner@colliers.com

VERN SCHULTZ, SIOR
Executive Vice President
847 698 8233
Vern.Schultz@colliers.com

No warranty or representation is made to the accuracy of the foregoing information.
Terms of sale or lease and availability are subject to change or withdrawal without notice.

COLLIERS INTERNATIONAL
6250 N. River Road, Suite 11-100
Rosemont, IL 60018
www.colliers.com

2400 S. Lafin Street > Floor Plan



VERN SCHULTZ, SIOR
Executive Vice President
847 698 8233
Vern.Schultz@colliers.com

MICHAEL L. SENNER, SIOR
Executive Vice President
847 698 8234
Mike.Senner@colliers.com

