

FOR LEASE

Carleton Business Park II

4625-4685 South Ash Avenue, Tempe, Arizona

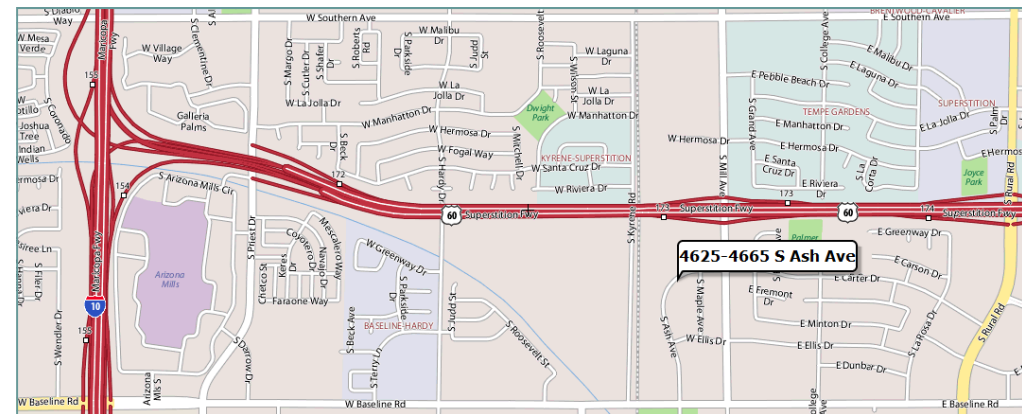


Availability

- 4625 S Ash Ave, Suite J 1-2:** ± 9,364 SF
- ◆ Reception, 3 Offices, Conference Room, Restroom, Warehouse
- 4645 S Ash Ave, Suite 1-8:** ± 2,180 SF
- ◆ Reception, 3 Offices, Conference Room, Restroom, Warehouse
- 4665 S Ash Ave, Suite G-6:** ± 1,464 SF
- ◆ 100% Drop Ceiling A/C Flex Suite, 1 Overhead Door
- 4665 S Ash Ave, Suite G 1-2:** ± 4,330 SF
- ◆ 100% Office Suite, No Roll-up Door, Reception, 12 Offices, 3 Conference Rooms, Break Room, 2 Restrooms, Bull Pen
- 4665 S Ash Ave, Suite G-15-16:** ± 3,970 SF
- ◆ 25% Office, Reception, 3 Private Offices, Break Room & 2 Restrooms

Property Features

- ◆ Attractive Landscaping And Glass lines
- ◆ Abundant Parking – Covered Available
- ◆ Excellent Freeway Access To I-10 & US-60
- ◆ Air Conditioned Warehouse, Flex, & Office Suites
- ◆ Grade Level Loading – 10' x 12' Overhead Doors



For more information, please contact:

DJ BEAN
Senior Associate
 (602) 386-1234
 djbean@cutlercommercial.com

ROD CROTTY
Associate Broker
 (602) 386-1225
 rcrotty@cutlercommercial.com

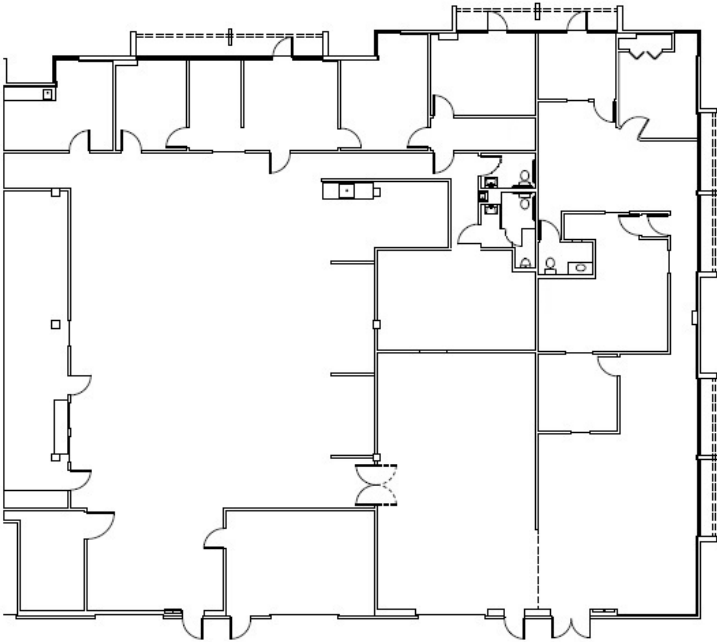
 **CUTLER COMMERCIAL**
 2150 E Highland Ave, Ste 207
 Phoenix, Arizona 85016
 602.955.3500 Phone
 602.955.2828 Fax
 www.cutlercommercial.com

FOR LEASE

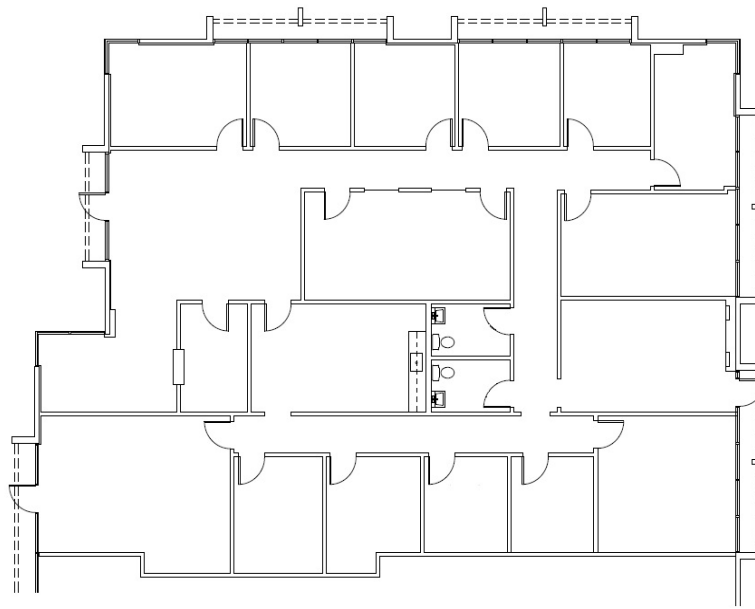
Carleton Business Park II

4625-4685 South Ash Avenue, Tempe, Arizona

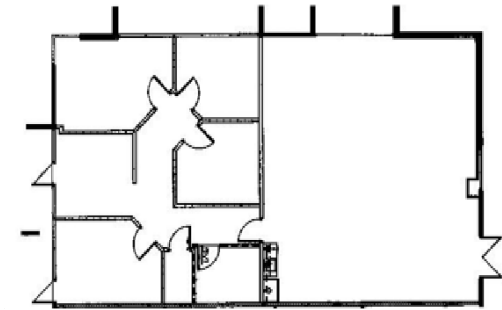
4625 S. Ash, Suite J-2
(6,835 Square Feet)



4625 S. Ash, Suite J-1
(2,529 Square Feet)

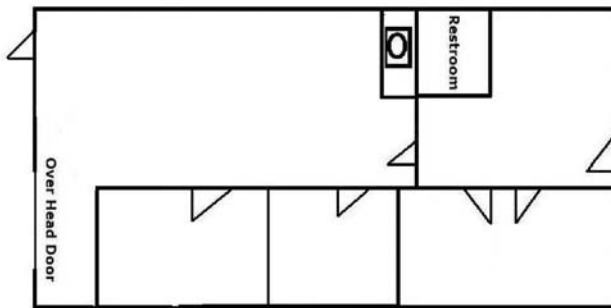


4665 S. Ash, Suite G-1
(4,330 Square Feet)



4645 S. Ash, Suite 1-8
(2,180 Square Feet)

4665 S. Ash, Suite G-6
(1,464 Square Feet)



4665 S. Ash, Suites G-15-16
(3,970 Square Feet)

