

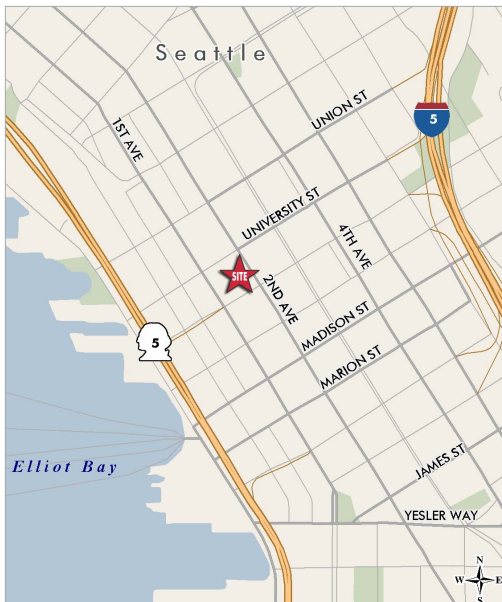
OFFICE  
SPACE FOR  
LEASE

# THE SENECA BUILDING

1221 SECOND AVENUE :: SEATTLE, WA

*Beautiful Environment In A  
Downtown Location Between  
The Waterfront, Retail Core And  
Financial Districts*

## LOCAL AREA MAP



AVAILABLE	±RSF	RATE/RSF/YR/ FULL SERVICE	COMMENTS
	2,802 Office		• Available NOW
<b>Seneca Street</b>	2,654 Assembly or Office	\$13.00– \$18.00	• Separate entrances off Seneca and alley
	5,456 Total		• Signage available

## FEATURES

- Classic turn-of-the-century building
- Renovated in 1986
- Prime downtown location
- Operable windows
- Brick detailing, tall ceilings
- On-site valet parking (.7/1,000) and bike racks in building garage
- On-site storage

FOR MORE  
INFORMATION  
PLEASE  
CONTACT

**Sally Patterson**  
206.292.6142  
sally.patterson@cbre.com  
www.cbre.com/sally.patterson

**Dan Stutz**  
206.292.6097  
dan.stutz@cbre.com  
www.cbre.com/dan.stutz

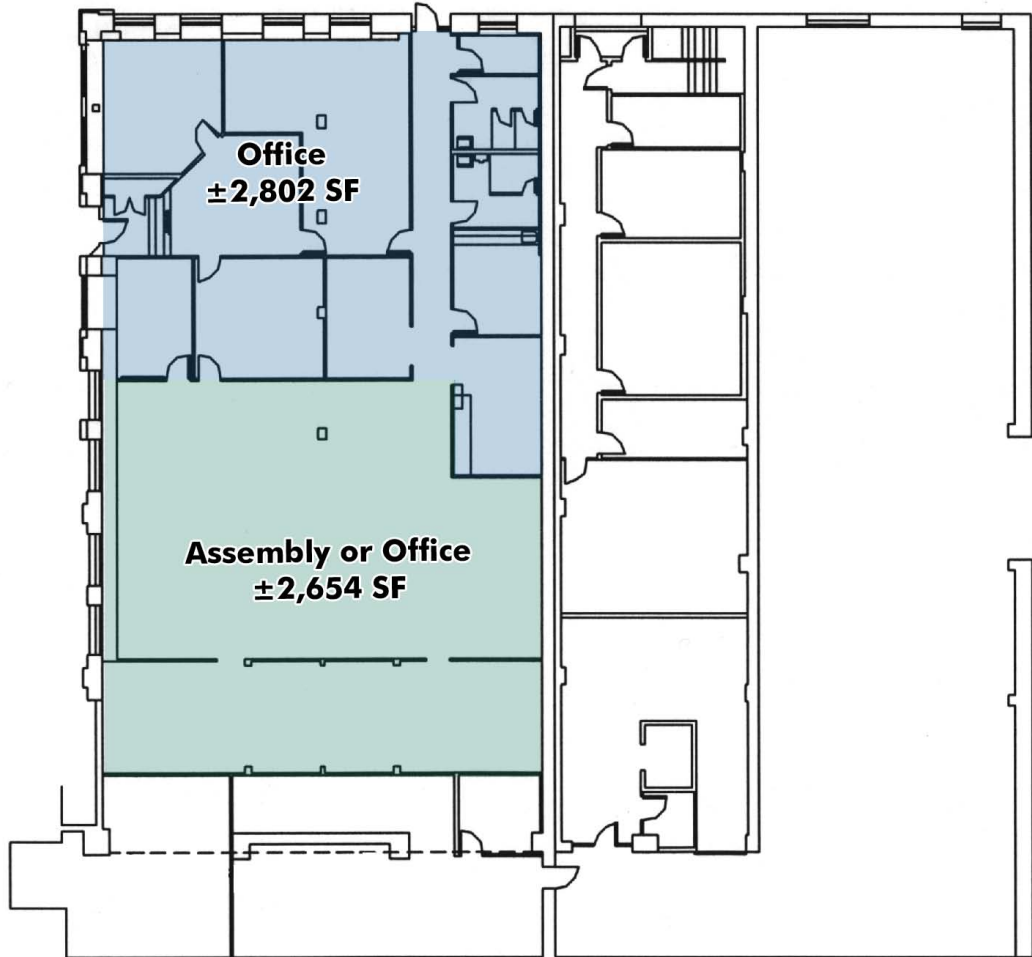
**CBRE**

OFFICE  
SPACE FOR  
LEASE

# THE SENECA BUILDING

1221 SECOND AVENUE :: SEATTLE, WA

STREET LEVEL - ±5,456 SF TOTAL



FOR MORE  
INFORMATION  
PLEASE CONTACT

**Sally Patterson**

206.292.6142

sally.patterson@cbre.com

**Dan Stutz**

206.292.6097

dan.stutz@cbre.com

**CBRE**

© 2012 CBRE, Inc. This information has been obtained from sources believed reliable. We have not verified it and make no guarantee, warranty or representation about it. Any projections, opinions, assumptions or estimates used are for example only and do not represent the current or future performance of the property. You and your advisors should conduct a careful, independent investigation of the property to determine to your satisfaction the suitability of the property for your needs. Photos herein are the property of their respective owners and use of these images without the express written content of the owner is prohibited. cjm 03-20-12