

# Oakbrook Terrace Square

SWC Roosevelt Road & Summit Avenue, Oakbrook Terrace, IL



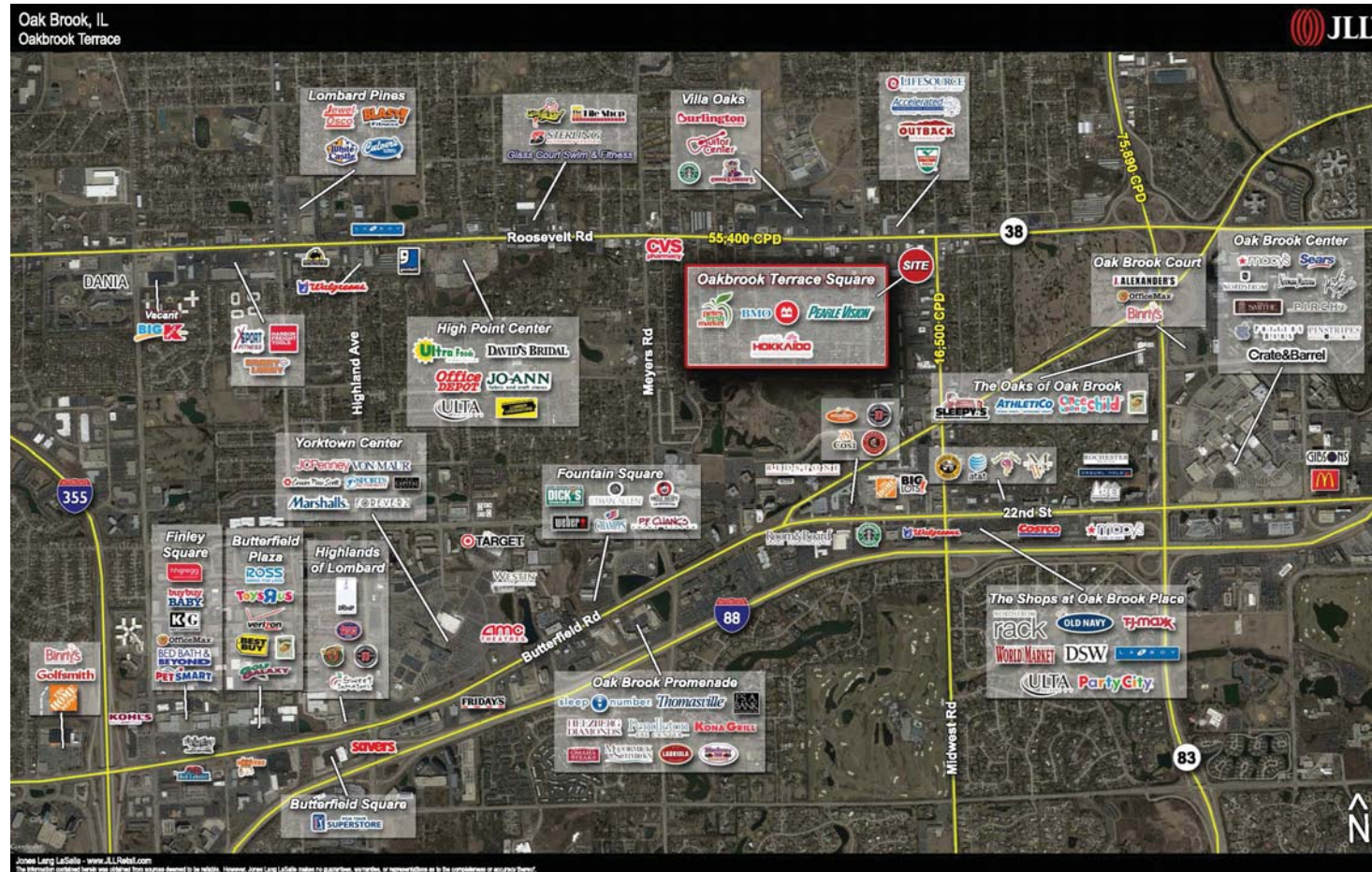
# Oakbrook Terrace Square

SWC Roosevelt Road & Summit Avenue, Oakbrook Terrace, IL

JUNIOR ANCHOR, RESTAURANT & SMALL SHOP SPACE AVAILABLE

JUNIOR ANCHOR, RESTAURANT & SMALL SHOP SPACE AVAILABLE

## Aerial Map



## Highlights

- Newly developed Oakbrook Terrace Square is a well positioned, grocery anchored retail center located directly on Roosevelt Road.
- With this center being located on Roosevelt Road (55,400 cpd) and Summit Avenue (16,500 cpd), this center is visible to a signalized and highly trafficked intersection.
- Due to the density of the surrounding population and the lack of sites available for new development on both Roosevelt Road and 22nd Street, this center has a unique market position which services the abundance of offices and residential customers.
- Easy accessibility to four major highways which has created a home to over 4,000,000 square feet of Office Developments.
- Minutes from Oakbrook Center, an upscale super-regional shopping center. It is the second largest shopping center in the Chicago area, by gross leasable area.



## CONTACTS

Peter Caruso  
VP, Retail Brokerage  
JLL  
tel +1 312 228 2926  
peter.caruso@am.jll.com

Michele Dugan  
VP, Retail Brokerage  
JLL  
tel +1 312 228 3167  
michele.dugan@am.jll.com

Jose O. Gonzalez  
Associate, Retail Brokerage  
JLL  
tel +1 312 228 2155  
jose.o.gonzalez@am.jll.com

ON  
BEHALF  
OF

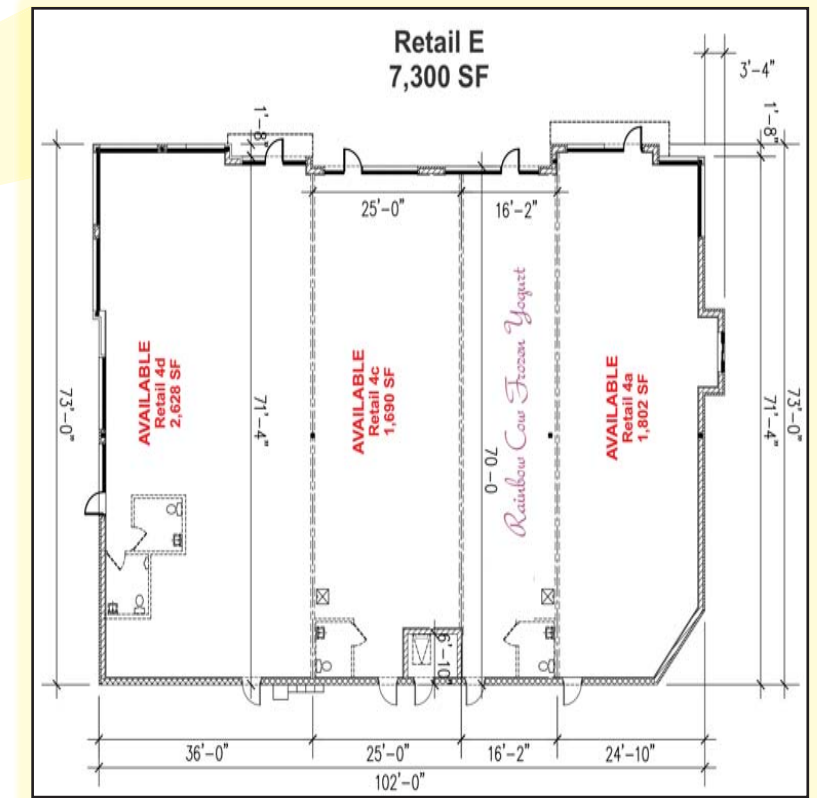
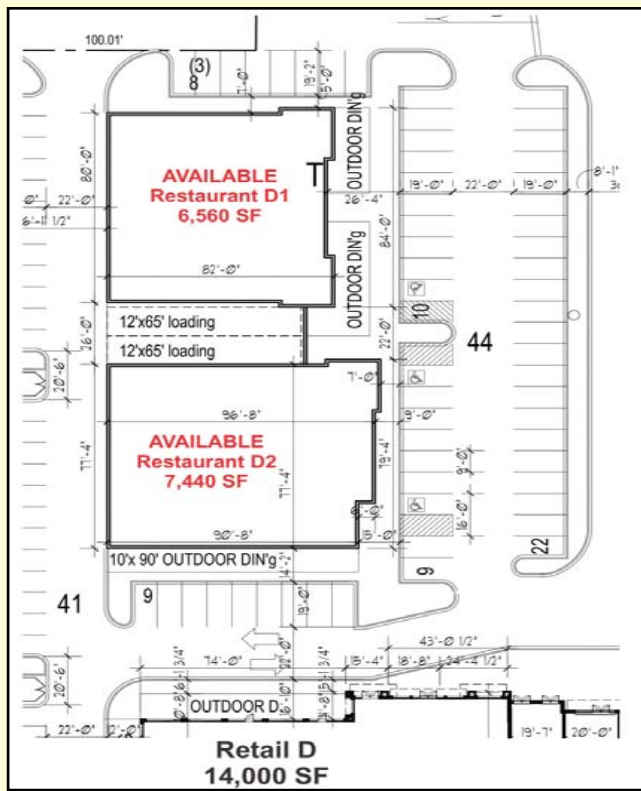


DEMOGRAPHICS	1-Miles	3-Miles	5-Miles
Population	11,295	97,735	260,561
Business Population	8,062	78,304	178,698
Households	4,295	38,508	97,509
Average HH Income	\$77,623	\$91,842	\$97,466
Median Age	38.8	40.7	40.6

Source: ESRI 2013

## Key Retailers

Big Lots  
Burlington Coat Factory  
Guitar Center  
Home Depot  
Office Depot  
Pete's Fresh Market  
The Tile Shop



**TOTAL GLA: 146,679 SF approx**  
**TOTAL Parking: 687 Spaces**

